



KQUALITY Fluorescence Microscopy (KLM-9000)

Standard features

- Binocular or Trinocular tube, 45°/ 30° inclined, 360° rotatable, IPD 55-75 mm, with Dioptic adjustment on left ocular

Coaxial Fine and Coarse Focusing Knobs on Both Sides of Microscope. Coarse Adjustment Travel Range: 22mm. (Stage Movement Distance Up/Down).

.Fine Adjustment Division: 0.002mm., Adjustable Lock Ring Stop to Limit Coarse Range to Protect

Slides, Tension Adjustable Coarse Focusing.

- Wide Field eyepiece WF 10x/16mm paired with eye guards
- DIN Fluorescent Achromatic Objectives 4x, 10x, 40x (Spring loaded) and 100x (Spring loaded), Oil immersion
- Transmitted Koehler Illumination system 6V-20W Halogen with intensity control
- Epi-fluorescence unit: power unit 220V, mercury lamp house 100W/DC, epi-fluorescence illuminator
- Excitation filter (EX) comprising of - Blue light (EX-490), Green Light (EX-545)
- Illumination Box with Power Supply Unit 220 Volt & HBO, Super High – pressured Spherical mercury vapor lamp 100W

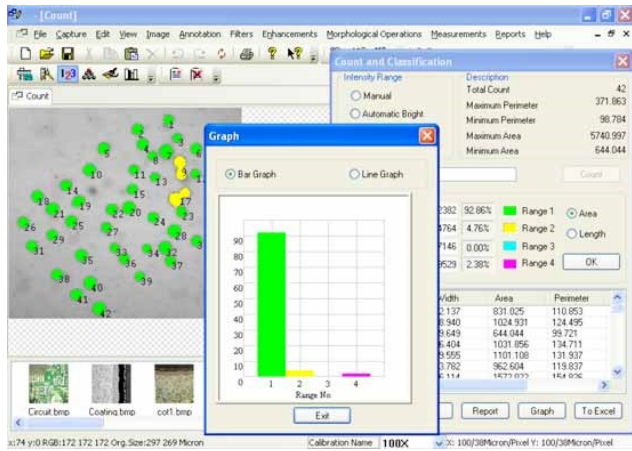
Instruction Manual, Dust cloth, Dust cover,

OPTIONAL ACCESSORIES IS BELOW,



DCM35 Digital Camera for Microscope

Digital camera for microscope



[KWALITY Medical Software](#)

USERS OF OUR KWALITY MEDICAL SOFTWARES

The software is meant for Botany, Zoology, Anthropology, Oncology, Pathology, Immunology, Microbiology, Virology, histopathology, Cytology, Orthodensity, Anatomy, Leaf analysis, Root Analysis, Sperm morphology, Genetics, Chromosome study, biotechnology, fishery, Horticulture Cell Morphology, Food industry, Breavarge industry, Colony counting, Cosmetic surgery, STD Lab, Malaria eradication

GALARY



