

Two model in the pathological microscope



research pathological Binocular /

Monocular MICROSCOPE (Model-KLM-103)

Frame All aluminum pressure diecasted body.

Paint P.U. coating in light cream shade.

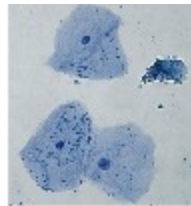
Nose piece Reverse type ultra Quadruple ball bearing nosepiece.

Binocular head 360° rotate able and 30° inclined head with all anti-fungus coated prisms.

Focusing system fine Co-axial focusing system with three planetary gears assb. With slide protection lock.

Mechanical stage Cxl Ball bearing double layer mechanical stage for smooth functioning.

Condenser	Condenser Bright field sub stage condenser having 1.2 N.A.
objectives	4x, 10x, 40x, and 100x and a paired set of 10x wide field eyepieces.
Eye piece	WF-10X (20mm)
Illumination	6v, 20w halogen lamp needs 220v (50Hz),110V(60Hz) optional supply.



KWALITY RESEARCH BINOCULAR MICROSCOPE (MODEL-SPL)

C shape corrosion resistant stand with convenient location of focus controls, Anti Fungus Treated

- Binocular or Trinocular tube, 45° inclined, 360° Rota table, IPD 55-75 mm, with Dioptic adjustment on left ocular
- Wide Field eyepiece WF 10x/18mm paired with eye guards.
- Quintuple Nosepiece with parcentric click stops
- SP series DIN Semi Plan Achromatic objectives 4x, 10x, 40x (Spring loaded) and 100x (Spring loaded), Oil immersion.
- CO AXAIL mechanical stage cross travel 76 x 50mm on ball bearing with co-axial control, Spring clip Double Slide Holder
- Moveable Sub-stage ABBE condenser NA 1.25 with aspheric lens. Iris diaphragm and special day light blue filter in swing out filter holder
- Co-axial coarse fine focusing with tension control and refocus lock
- Illumination system 6V-20W Halogen

Instruction Manual, Dust cloth, Dust cover,

OPTIONAL ACCESSORIES IS BELOW,



Micrometer Eyepiece-10X (EYE PIECE)

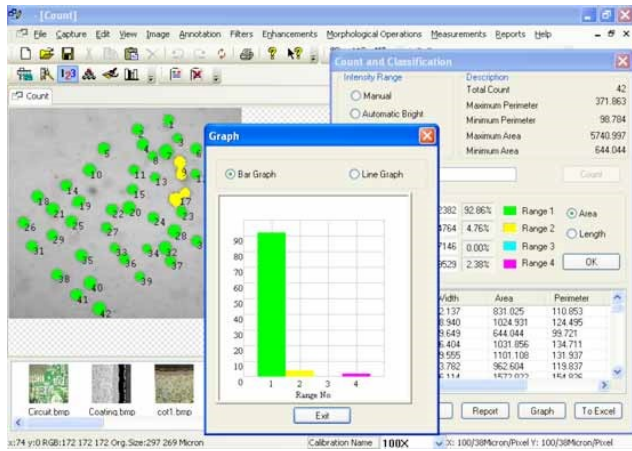


WODDEN BOX



DCM35 Digital Camera for Microscope

Digital camera for microscope



[KQUALITY Medical Software](http://www.kquality.com)

USERS OF OUR **KQUALITY** MEDICAL SOFTWARES

The software is meant for Botany, Zoology, Anthropology, Oncology, Pathology, Immunology, Microbiology, Virology, histopathology, Cytology, Orthodensity, Anatomy, Leaf analysis, Root Analysis, Sperm morphology, Genetics, Chromosome study, biotechnology, fishery, Horticulture Cell Morphology, Food industry, Breavarge industry, Colony counting, Cosmetic surgery, STD Lab, Malaria eradication

GALARY



